

Luchtkanaalbeugels

zonder inlegstrip, roestvaststaal

Toepassing

- Voor de bevestiging van spiraalgefelsde buizen

Uw voordelen

- Afgestemd op de afmetingen van de luchtkanalen
- Door twee sluitbouten betere aanpassing aan grotere toleranties van de leidingdiameters

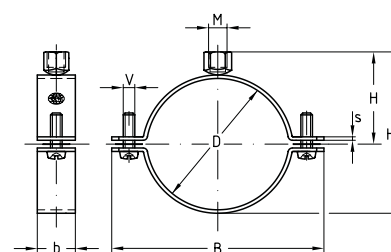


De gegevens



Max. aanbevolen belasting [N]

500



| Nominale diameter DN | Aansluitdraad | Materiaal | Afmetingen [mm] | | | | | | Artikelnr. | Verp. eenheid | Eenheid |
|-------------------------|---------------|-----------|-----------------|--------|-----|----|-----|----|------------|---------------|---------|
| | | | B | H | H1 | b | s | V | | | |
| 50 | M8 | RVS 3.04 | 95 | 39 | 66 | 25 | 1,5 | M6 | 115606 | 1 | Stuk |
| 63 | | | 108 | 45 | 79 | | | | 115612 | | |
| 71 | | | 116 | 49 | 87 | | | | 115618 | | |
| 80 | | | 125 | 54 | 96 | | | | 115627 | | |
| 90 | | | 135 | 59 | 106 | | | | 115633 | | |
| 100 | | | 146 | 64 | 117 | | | | 115506 | | |
| 112 | | | 158 | 70 | 129 | | | | 115512 | | |
| 125 | | | 171 | 77 | 142 | | | | 115521 | | |
| 140 | | | 186 | 84 | 157 | | | | 115533 | | |
| 150 | | | 196 | 89 | 167 | | | | 115542 | | |
| 160 | | | 206 | 94 | 177 | | | | 115548 | | |
| 180 | | | 226 | 107 | 197 | | | | 115555 | | |
| 200 | | | 246 | 114 | 217 | | | | 115560 | | |
| 224 | | | 272 | 131 | 247 | | | | 115567 | | |
| 250 | | | 298 | 144 | 273 | | | | 115576 | | |
| 280 | | | 328 | 159 | 303 | | | | 115582 | | |
| 300 | | | 349 | 170 | 324 | | | | 115585 | | |
| 315 | | | 364 | 177 | 339 | | | | 115594 | | |
| 355 | | | 404 | 197 | 379 | | | | 115600 | | |
| 400 | 449 | 220 | 424 | 115603 | | | | | | | |
| 450 | M10 | RVS 3.04 | 515 | 245 | 474 | 25 | 2,5 | M8 | 115456 | 1 | Stuk |
| 500 | | | 565 | 270 | 524 | | | | 115461 | | |
| 560 | | | 625 | 300 | 584 | | | | 115464 | | |
| 600 | | | 665 | 320 | 624 | | | | 115467 | | |
| 630 | | | 696 | 335 | 655 | | | | 115470 | | |
| 710 | | | 776 | 375 | 735 | | | | 115476 | | |
| 800 | | | 866 | 420 | 825 | | | | 115479 | | |